









STATE FARM INSURANCE

ADJUSTING CO.

RESTORATION

14701











APPROACH



- Replicable model for communities
- Public-private partnerships
- Citizen-centered – voice of flood victims
- Community-wide + brings multi-benefits e.g. health of rivers

A photograph of a flooded residential street. The water is murky brown and reaches up to the windows of cars parked on the side. In the center, a group of people are in a small wooden boat, navigating the flood. The street is lined with lush green trees, and a utility pole with wires is visible on the left. The scene is captured from a low angle, looking down the length of the flooded road.

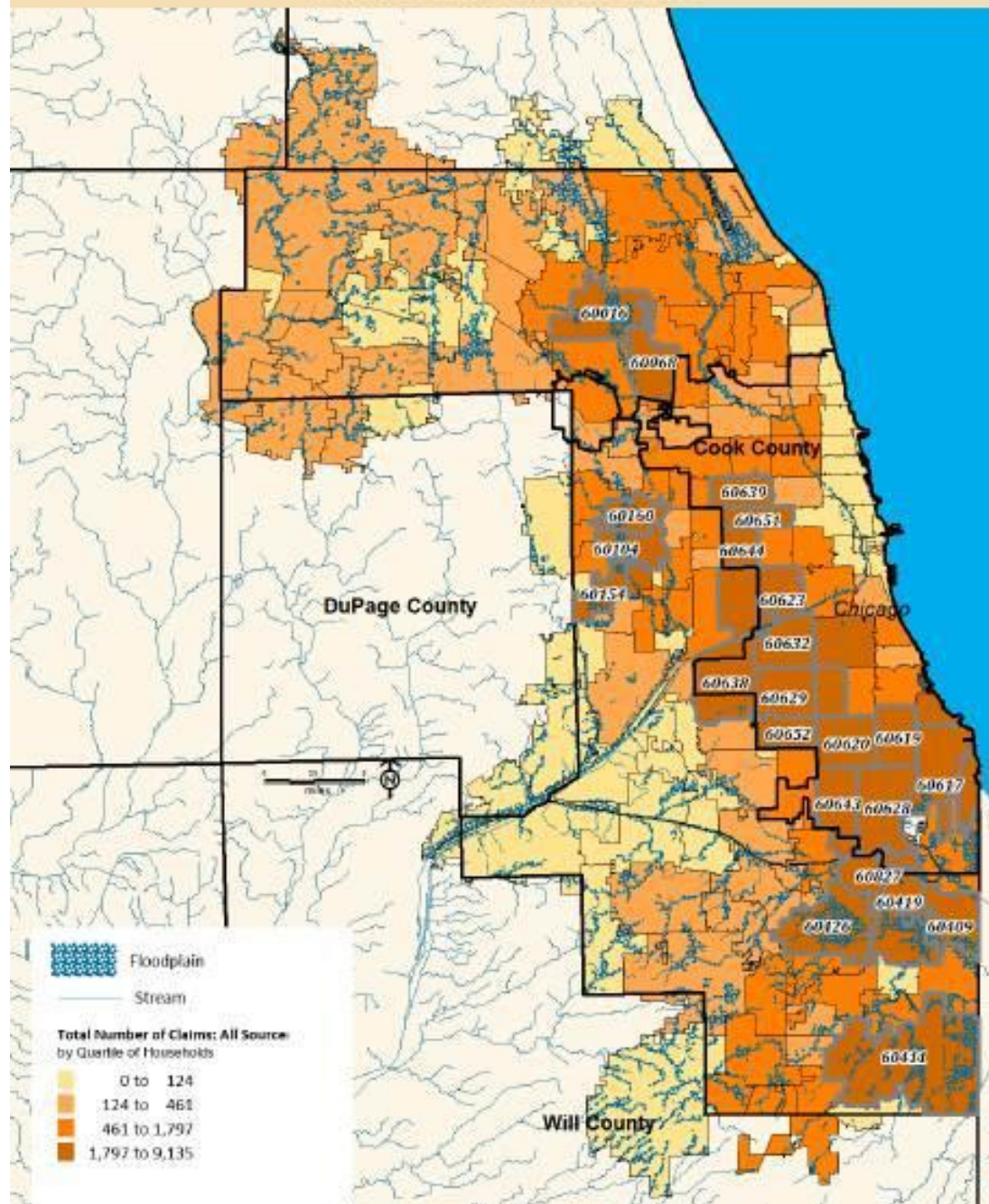
The Prevalence and Cost of Urban Flooding

A Case Study of Cook County, IL

Phase One (May 2013)



Total Combined Payout: Private Insurance, National Flood Insurance Policy, Disaster Relief Assistance





When my property flooded
I lost my...

TELEVISION
COUCH
LOVE SEAT
2-HASSOCKS
6-BOOKSHELVES
DESK + CHAIR
TABLES - SIDE
ELABORATE COFFEE
TABLE

2 BOOKSHELVES
STORAGE SHELVES
FREEZER
GRANDFATHER CLOCK
TAPE STORAGE RACK
3-BUILT IN CLOTHES CLOSETS

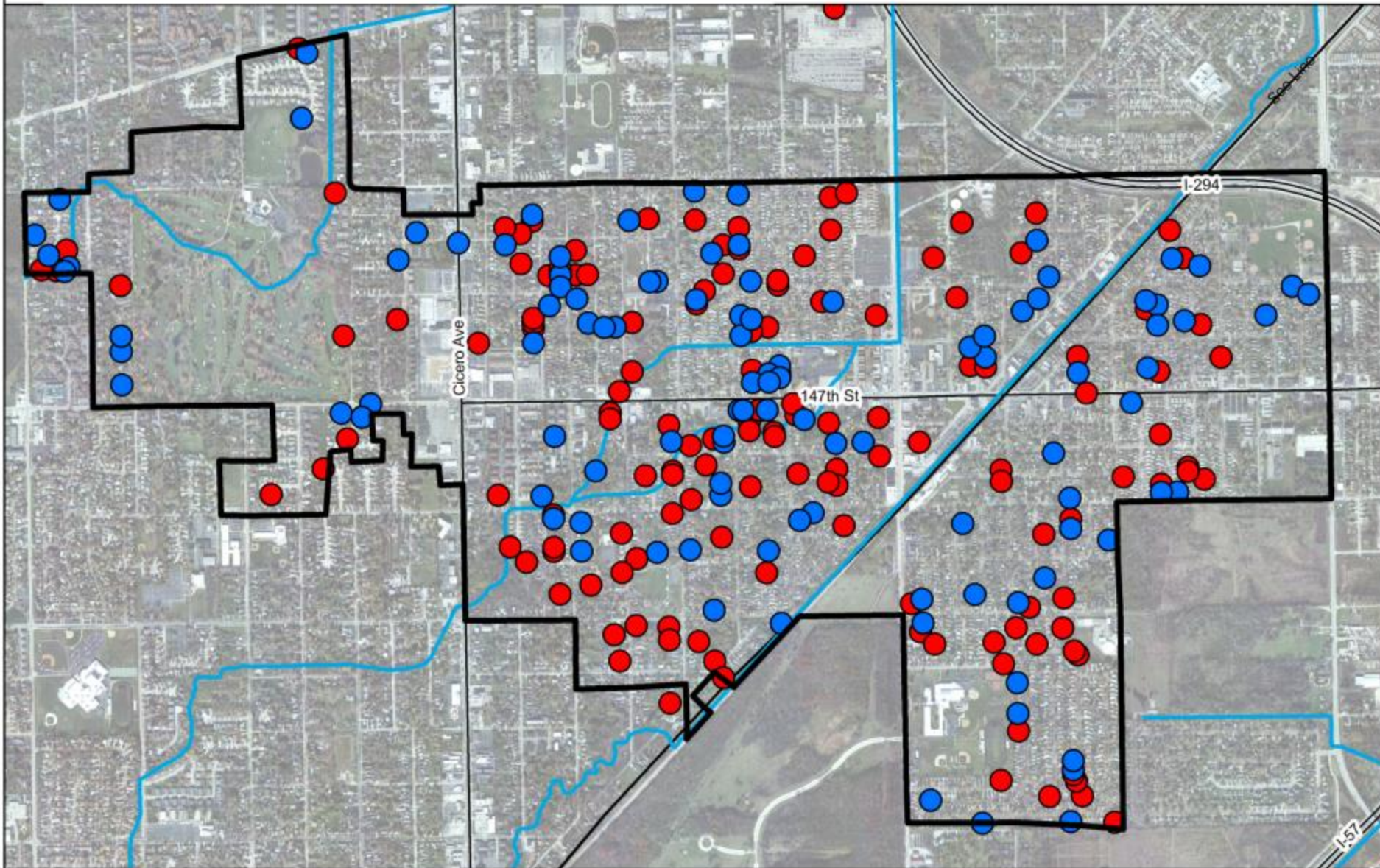






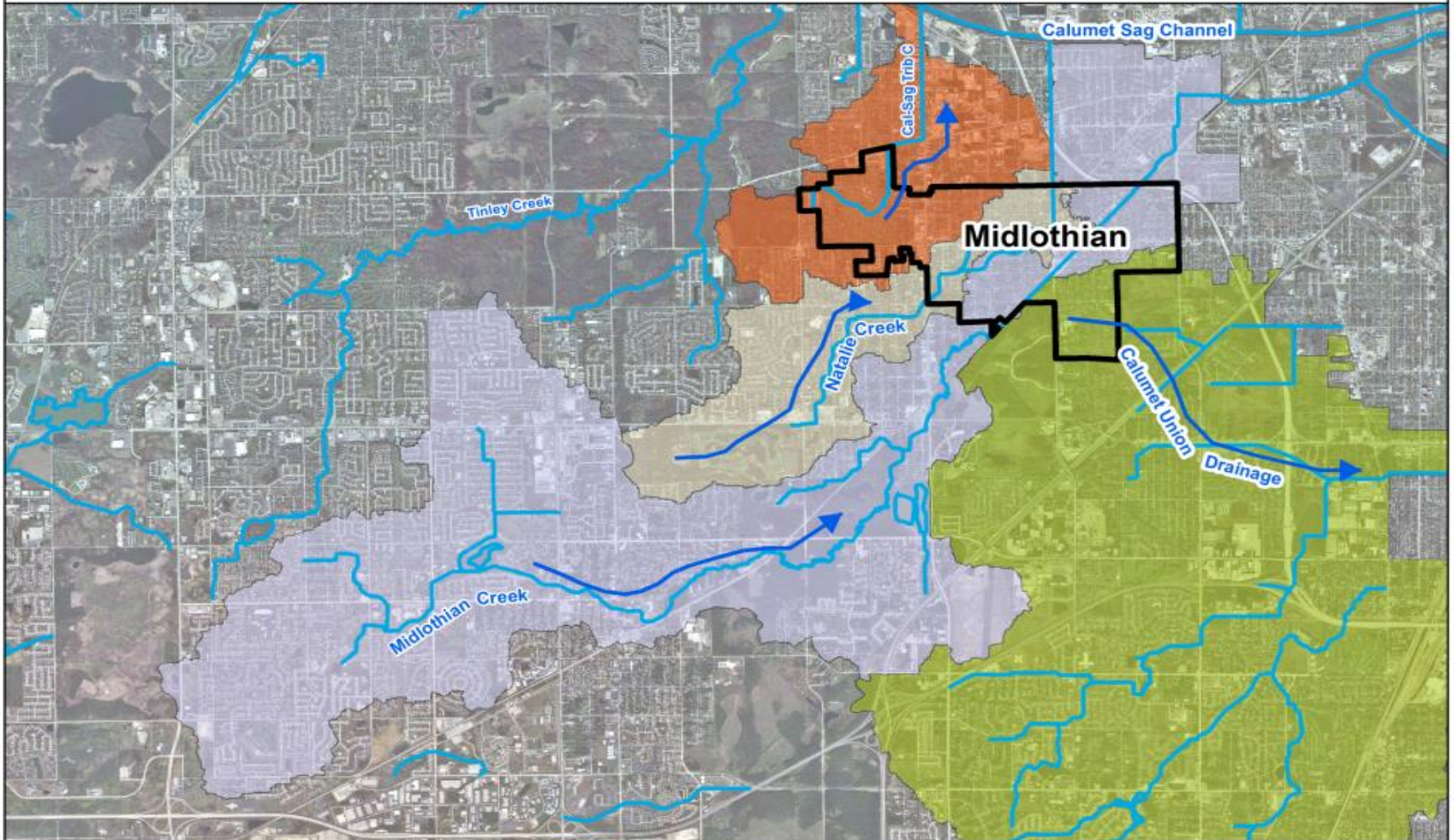
Do you experience flooding?

● Yes - 57% ● No - 43%



Village of Midlothian Watersheds

Midlothian Creek Natalie Creek Cal-Sag Trib C Calumet Union Drainage







RAINREADY HOME















RAINREADY COMMUNITY







ESTABLISHED 1852

Stoip Ave

MUESTRAS
SE GIGIO

River St

SPEED
LIMIT









YOUR HOME

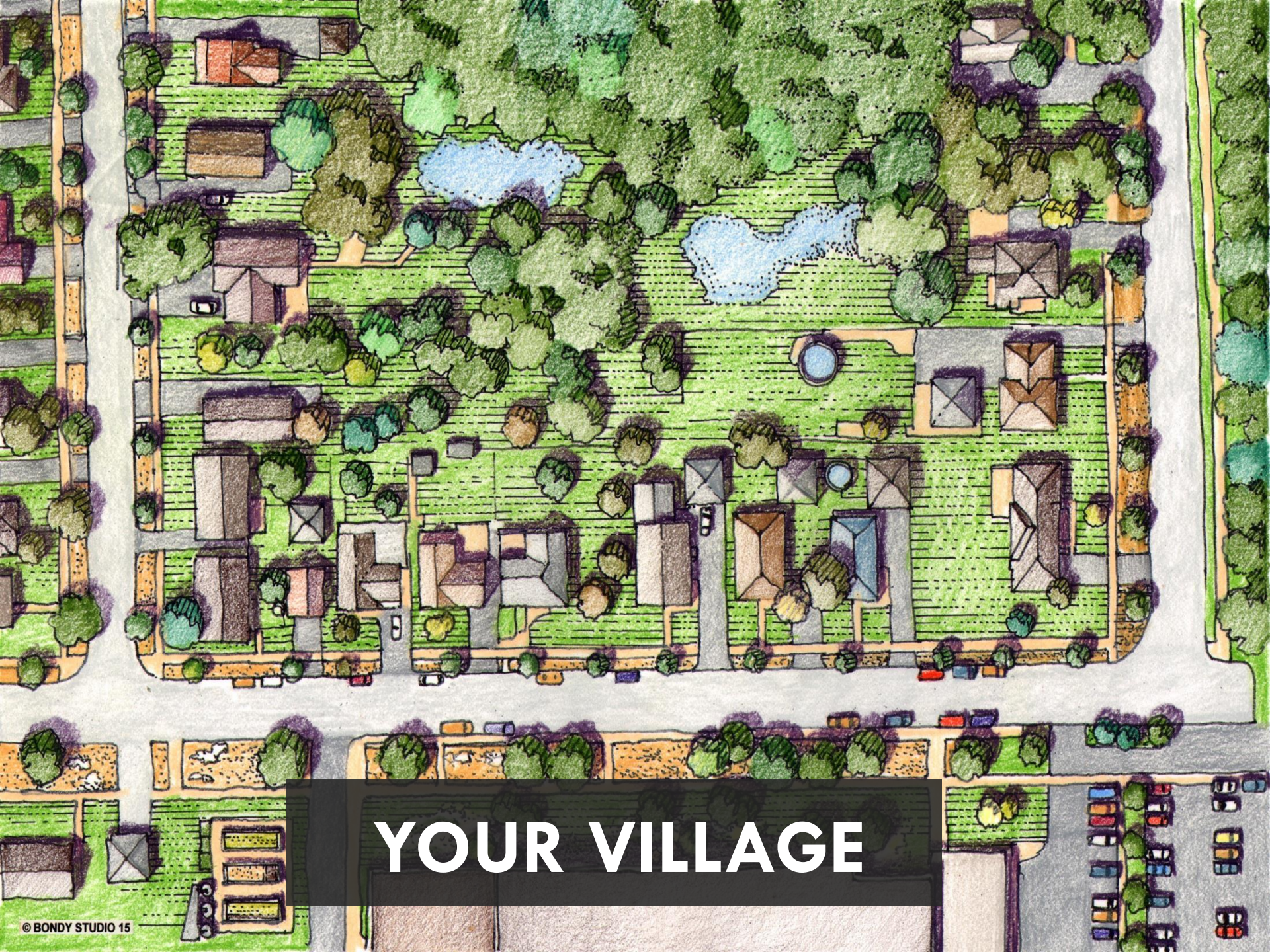


YOUR STREET





YOUR CREEK



YOUR VILLAGE



TEAM FLOODLOTHIAN
Salutes The Grand Old Flag
Catch The Wave With
Team Floodlothian

WARNING
All Unauthorized
Vehicles Will Be Towed
SAT 9-1



Dick Durbin
U.S. Senator



Kathryn Tholin
CEO
Center for Neighborhood Technology



RECOMMENDED NEXT STEPS
Access: Multiple property owners experience sanitary sewer backup in their basements. One of the primary causes of backup is related to infiltration and effluent (I&E) or private lateral from 11 refers to the process by which stormwater enters the sanitary sewer system, either as a result of cracks in all pipes or because of improper down sewer connections to sanitary sewer lines, sump pits, sump pumps and driveway drains. Repairing these down sewer events basement backup across the village.

PARTNERS
City of Evanston
Evanston Department of Public Works
Evanston Department of Public Safety
Evanston Department of Public Works
Evanston Department of Public Works
Evanston Department of Public Works
Evanston Department of Public Works

FUNDING
City of Evanston
Evanston Department of Public Works
Evanston Department of Public Works
Evanston Department of Public Works
Evanston Department of Public Works
Evanston Department of Public Works
Evanston Department of Public Works

GET INVOLVED
Want to stay in the loop?
Sign up for our newsletter
www.EvanstonIL.gov

QUESTIONS?
Evanston Sewer Backup Steering Committee
www.EvanstonIL.gov



A man with a shaved head and glasses is seen from behind, wearing a bright blue t-shirt. He is sitting in an audience, looking towards a speaker at a podium in the background. The setting appears to be a church or community hall with purple walls and a large screen displaying a colorful graphic. Other audience members are visible in the foreground and background.

Are You RainReady?

rainready.org