



US Army Corps
of Engineers



Illinois River Basin Restoration Alton Pool Islands

Jason Farmer
U.S. Army Corps of Engineers
St. Louis District

One Corps Serving the Armed Forces and the Nation



US Army Corps
of Engineers

Illinois River Basin Restoration Alton Pool Islands



Wing Island



Fisher Island



Twin Islands

— *One Corps Serving the Armed Forces and the Nation* —



US Army Corps
of Engineers

Illinois River Basin Restoration Alton Pool Islands



- **519 Project seeks to restore 2 degraded islands and side channels in the Alton Pool of the IL River**
- **NESP Project seeks to protect and restore a pair of islands, their shared channel, and the side channel**
- **Separate Project Implementation Reports with integrated Environmental Assessments will be prepared for the 519 project and the NESP project**



US Army Corps
of Engineers

Illinois River Basin Restoration Alton Pool Islands



Potential restoration measures include:

- **bullnose construction**
- **shoreline revetment**
- **off-bankline revetment**
- **side channel dredging**
- **enrichment of upstream island tips**
- **revegetation**



US Army Corps
of Engineers

Illinois River Basin Restoration Alton Pool Islands



■ FY07 Work

- Dredge sampling and analysis
- Additional coordination with landowners and development of alternatives
- Pre-construction monitoring (summer)
- Set up team and begin benefits quantification (WHAG, AHAG)
- Development of Environmental Assessment

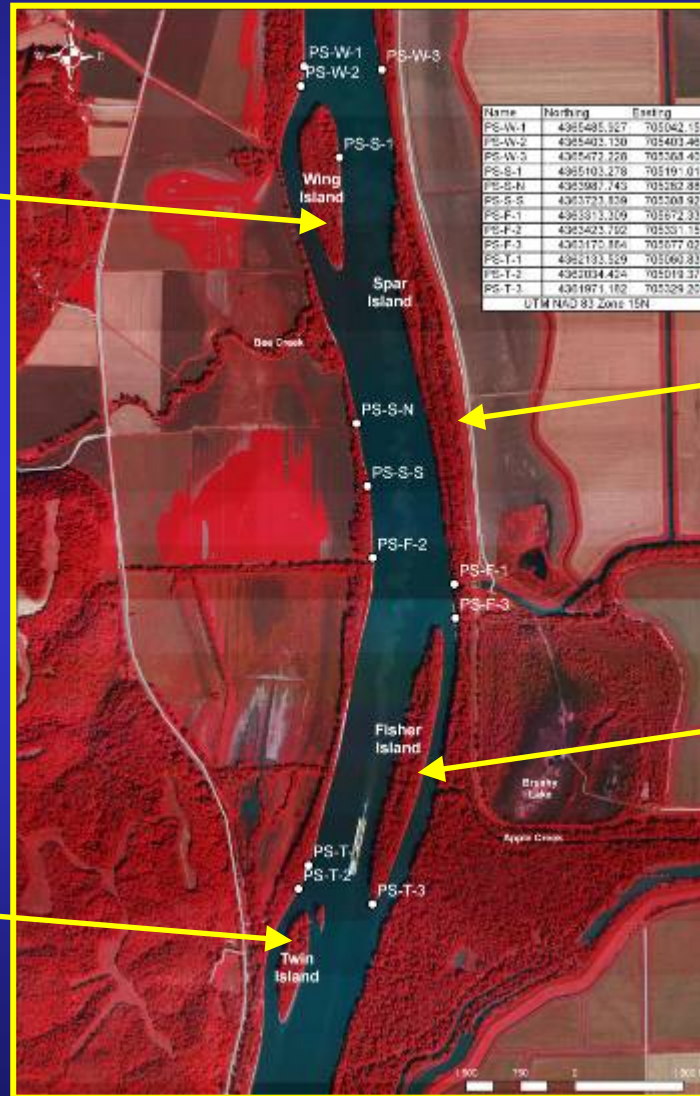


US Army Corps
of Engineers

Illinois River Basin Restoration Alton Pool Islands



Wing Island
RM 40.3 (R)



Spar Island
RM 39.8 (L)

Fisher Island
RM 38.8 (L)

Twin Islands
RM 38.0 (R)
(NESP)



US Army Corps
of Engineers

Illinois River Basin Restoration Alton Pool Islands



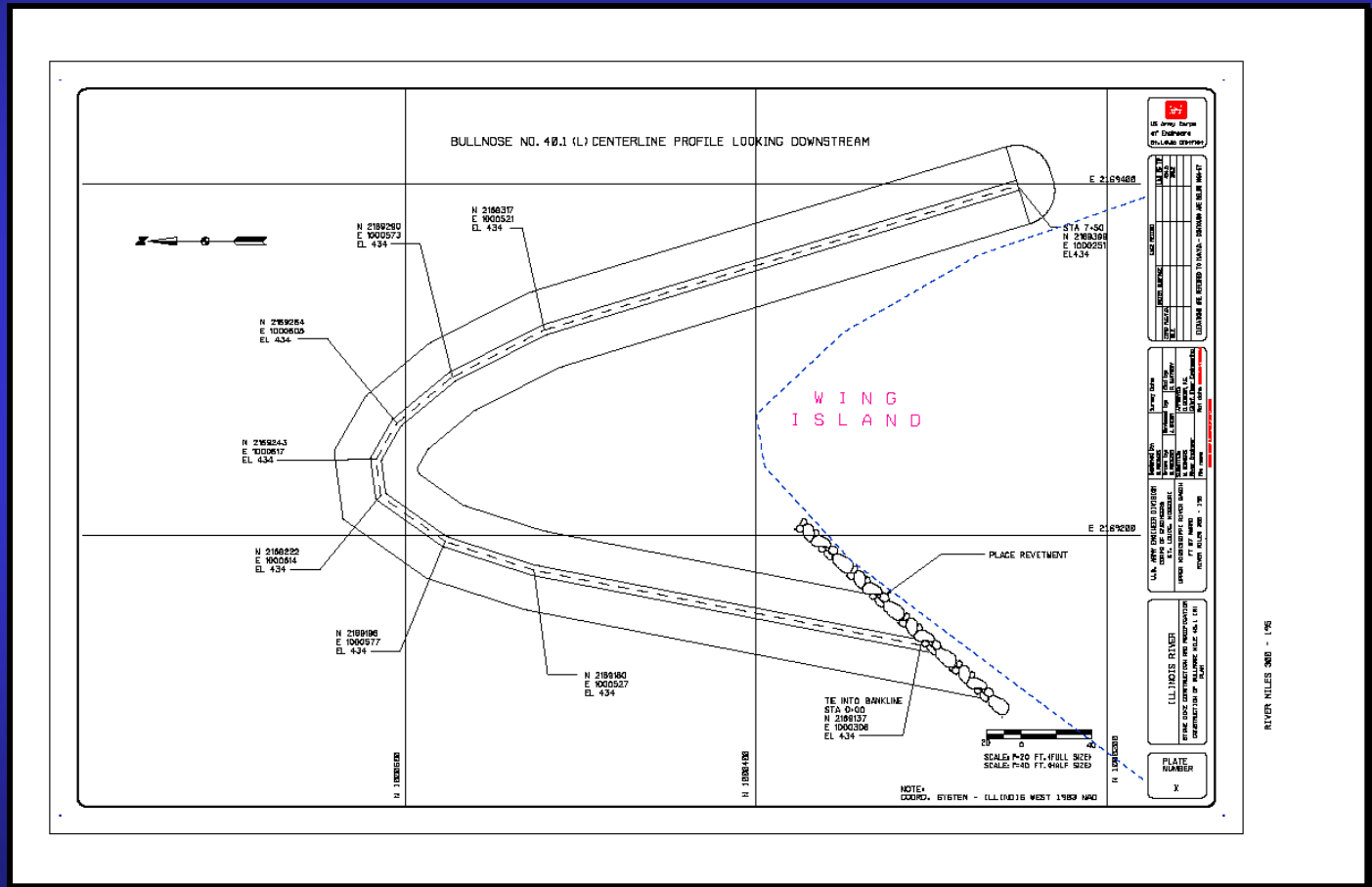
Wing Island

One Corps Serving the Armed Forces and the Nation



US Army Corps
of Engineers

Wing Island Design



One Corps Serving the Armed Forces and the Nation



US Army Corps
of Engineers

Illinois River Basin Restoration Alton Pool Islands



F
I
S
H
E
R



I
S
L
A
N
D

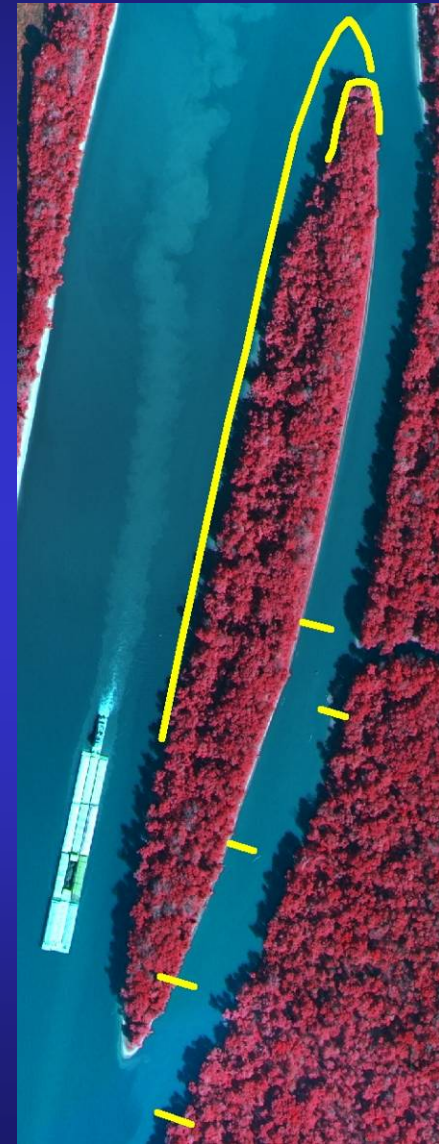
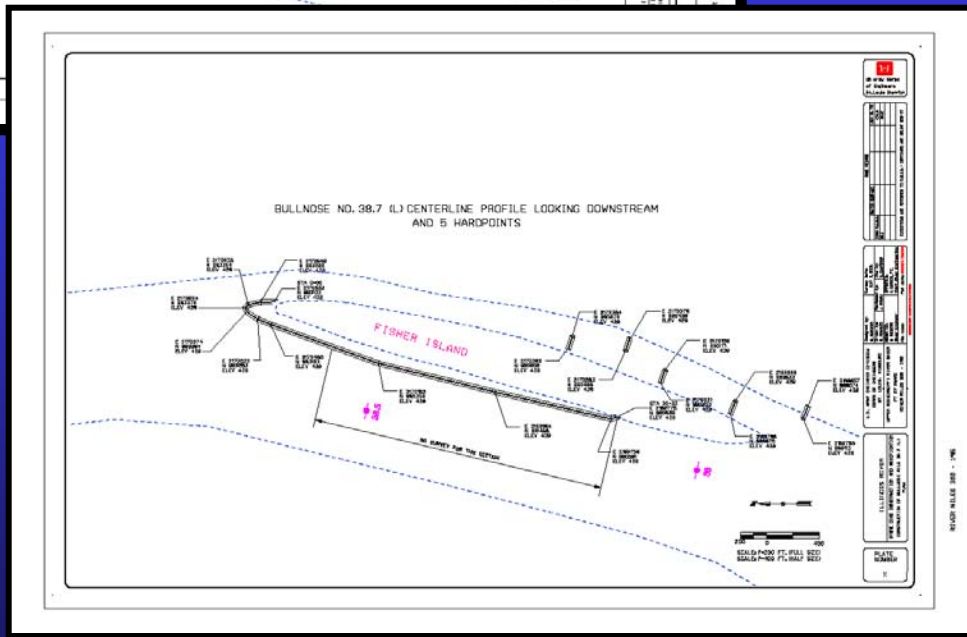
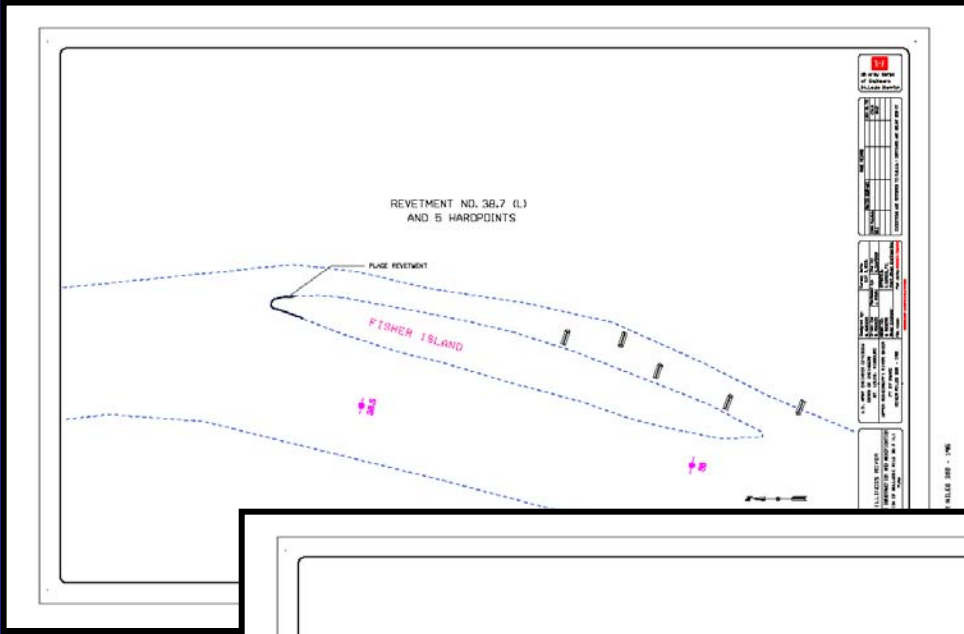


— One Corps Serving the Armed Forces and the Nation —



US Army Corps of Engineers

Fisher Island Design



One Corps Serving the Armed Forces and the Nation



US Army Corps
of Engineers

Illinois River Basin Restoration Alton Pool Islands



T
W
I
N

I
S
L
A
N
D
S

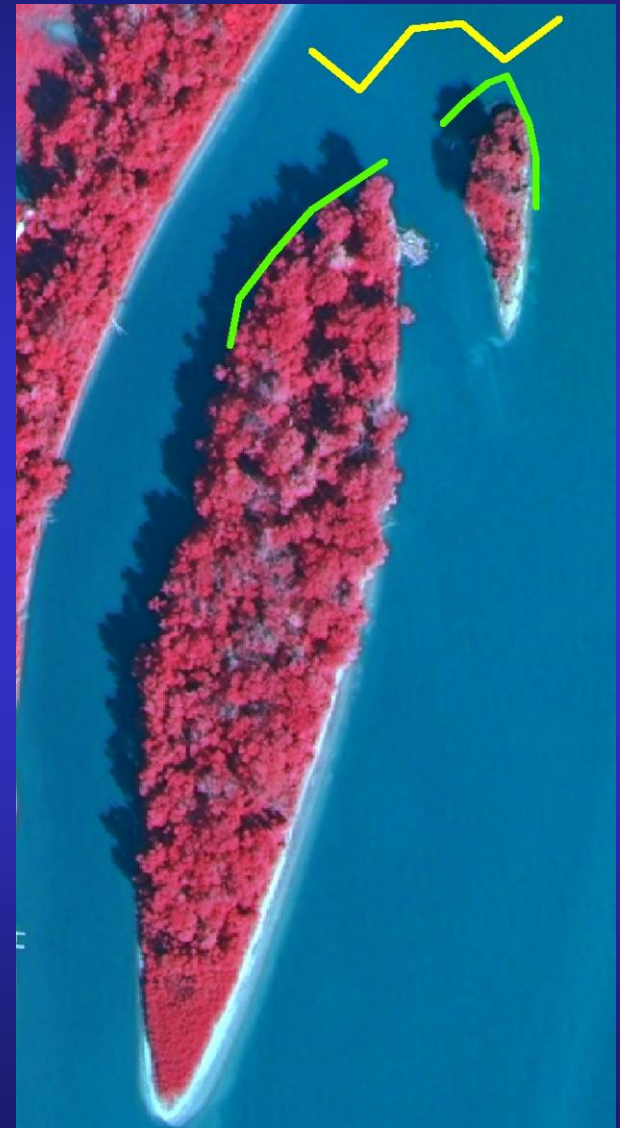
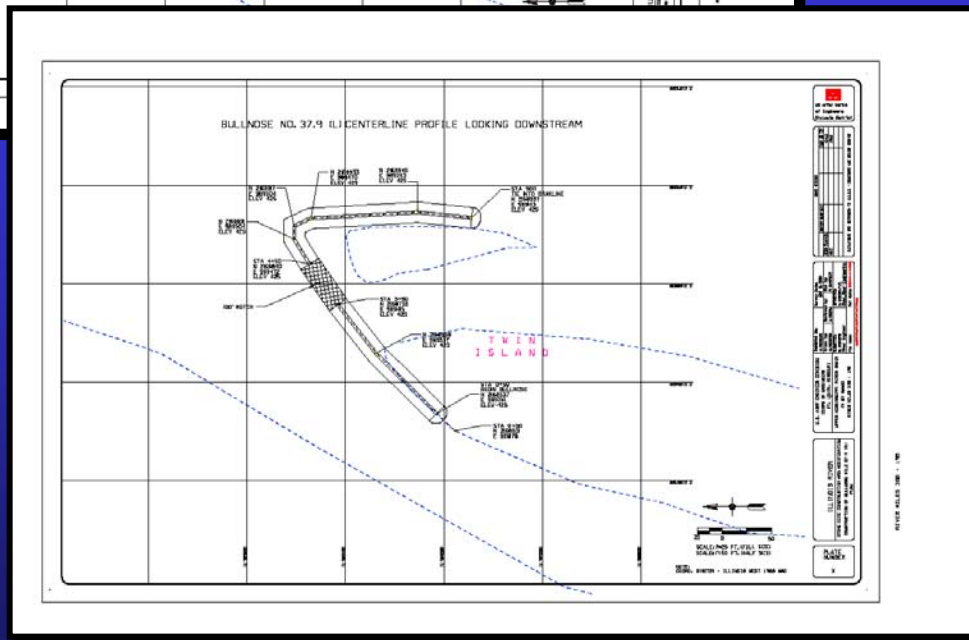
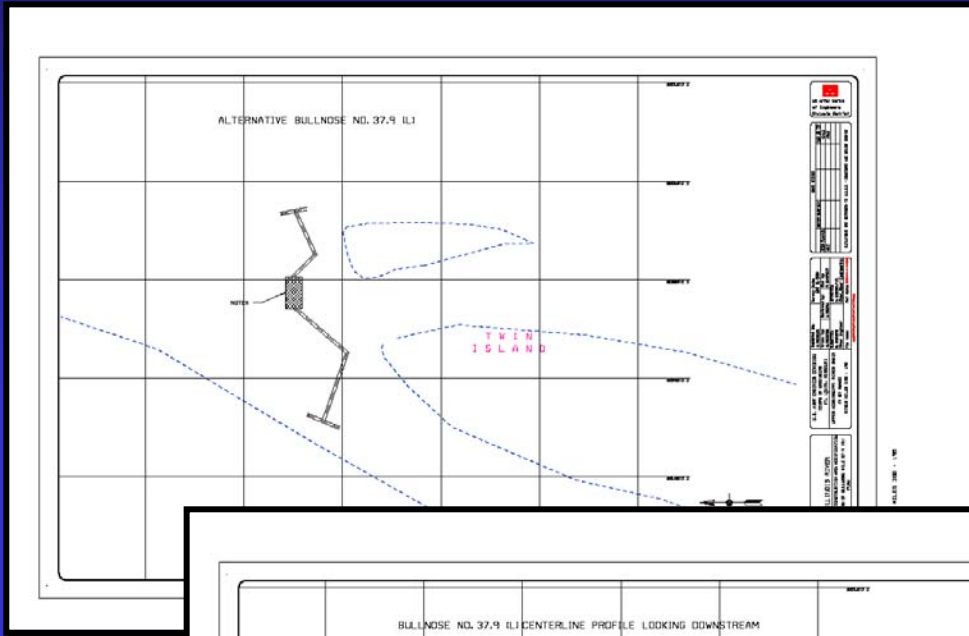


One Corps Serving the Armed Forces and the Nation



US Army Corps
of Engineers

Twin Island Design(s)



One Corps Serving the Armed Forces and the Nation



US Army Corps
of Engineers

Project Area Sampling



- **Three project islands and three control islands are being sampled as part of data gathering process**
- **Electrofishing – near shore sampling is being conducted around the entire perimeter of all islands**
- **Trawling – Series of one minute timed trawls are conducted on the sides**
- **All four seasons will be sampled before and after project implementation**



US Army Corps
of Engineers

Summer Sampling Session



— One Corps Serving the Armed Forces and the Nation —



US Army Corps
of Engineers

Lots of Nice Fish.....



— One Corps Serving the Armed Forces and the Nation —



US Army Corps
of Engineers

...and Plenty of Pests Too.



One Corps Serving the Armed Forces and the Nation



US Army Corps
of Engineers

What is Next?



- Continue with fall, winter, and spring sampling
- Investigate the potential for a project on Spar Island
- Discuss the potential for enhancements along Apple Creek
- Decide on final design for Twin Islands



US Army Corps
of Engineers

Illinois River Basin Restoration Alton Pool Islands



One Corps Serving the Armed Forces and the Nation