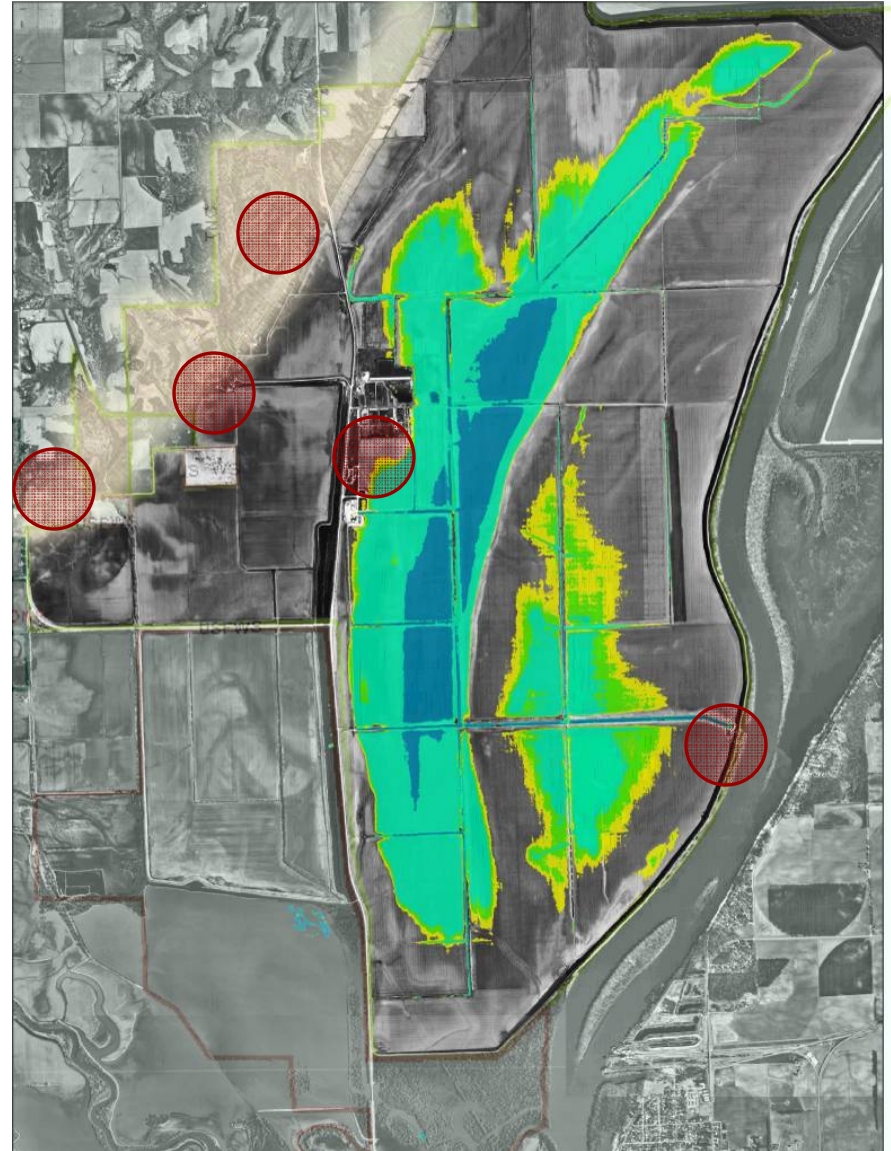
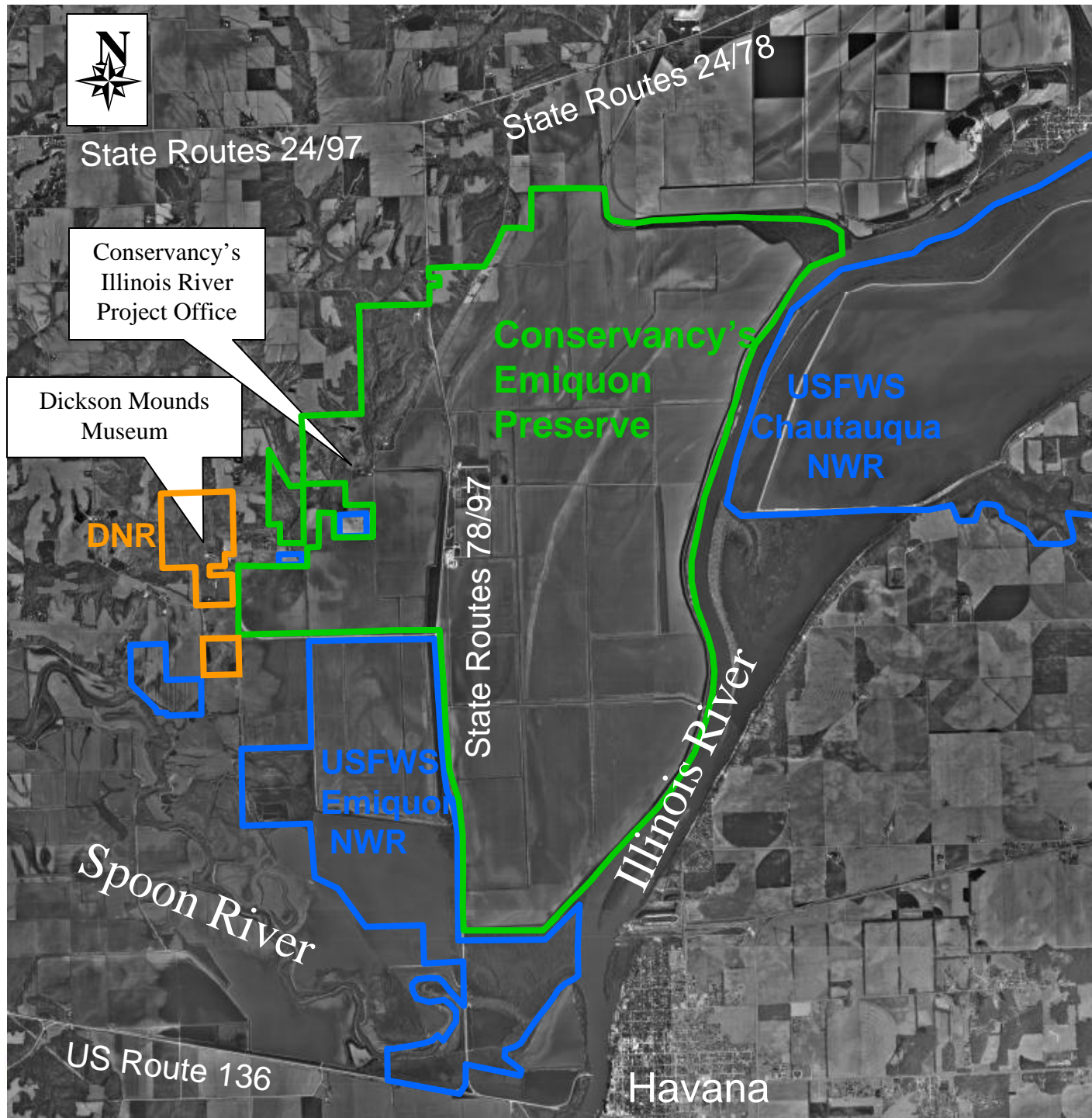


Emiquon Preserve Visitor Use Master Plan



SAVING THE LAST GREAT PLACES ON EARTH





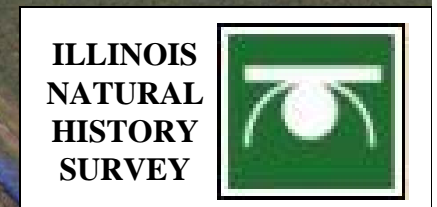
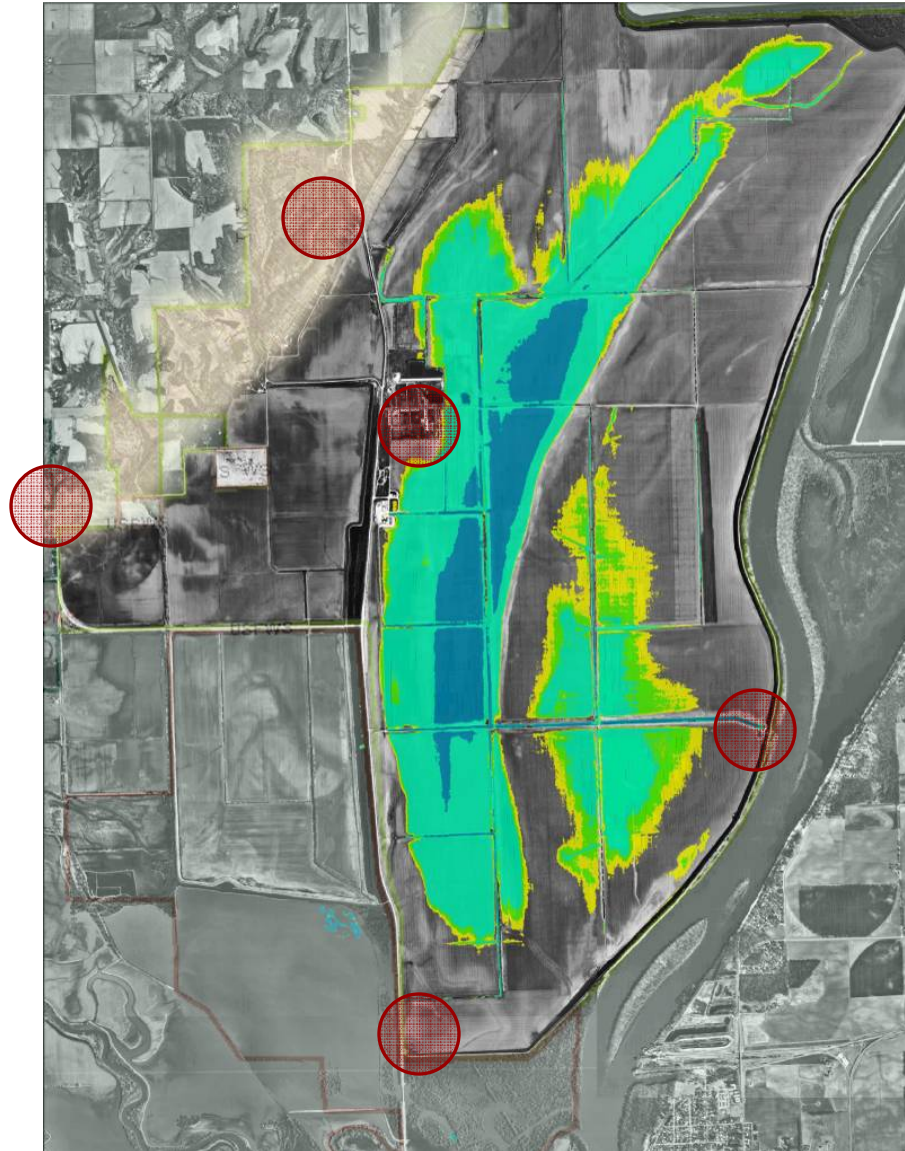


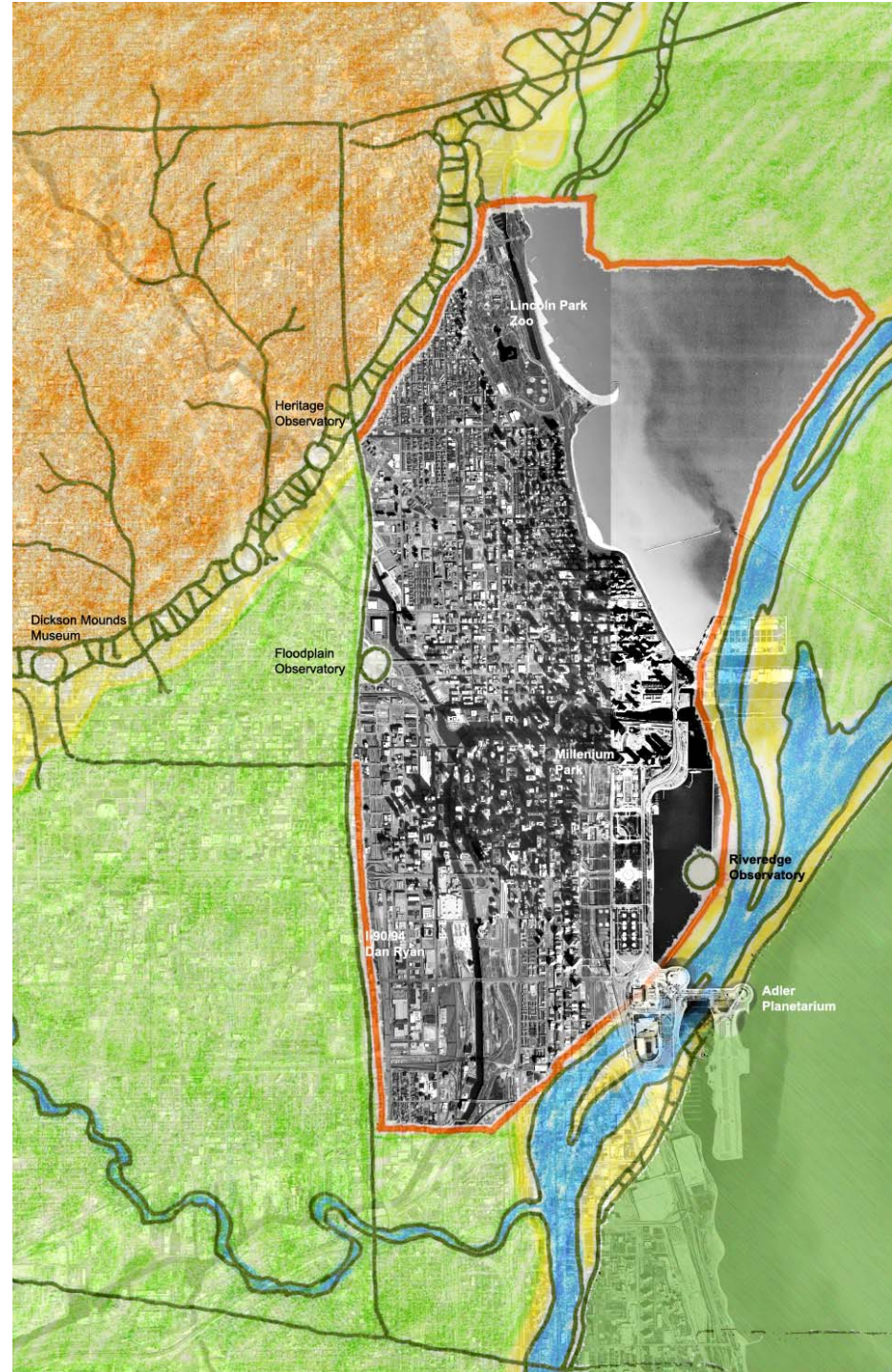
Photo by Chris Young of The State Journal Register

Emiquon Preserve visitor Use Master Plan





Access Site Scale



Two Powerful Narratives for Emiquon

- Natural and Physical Resources
- Long, Layered Human History

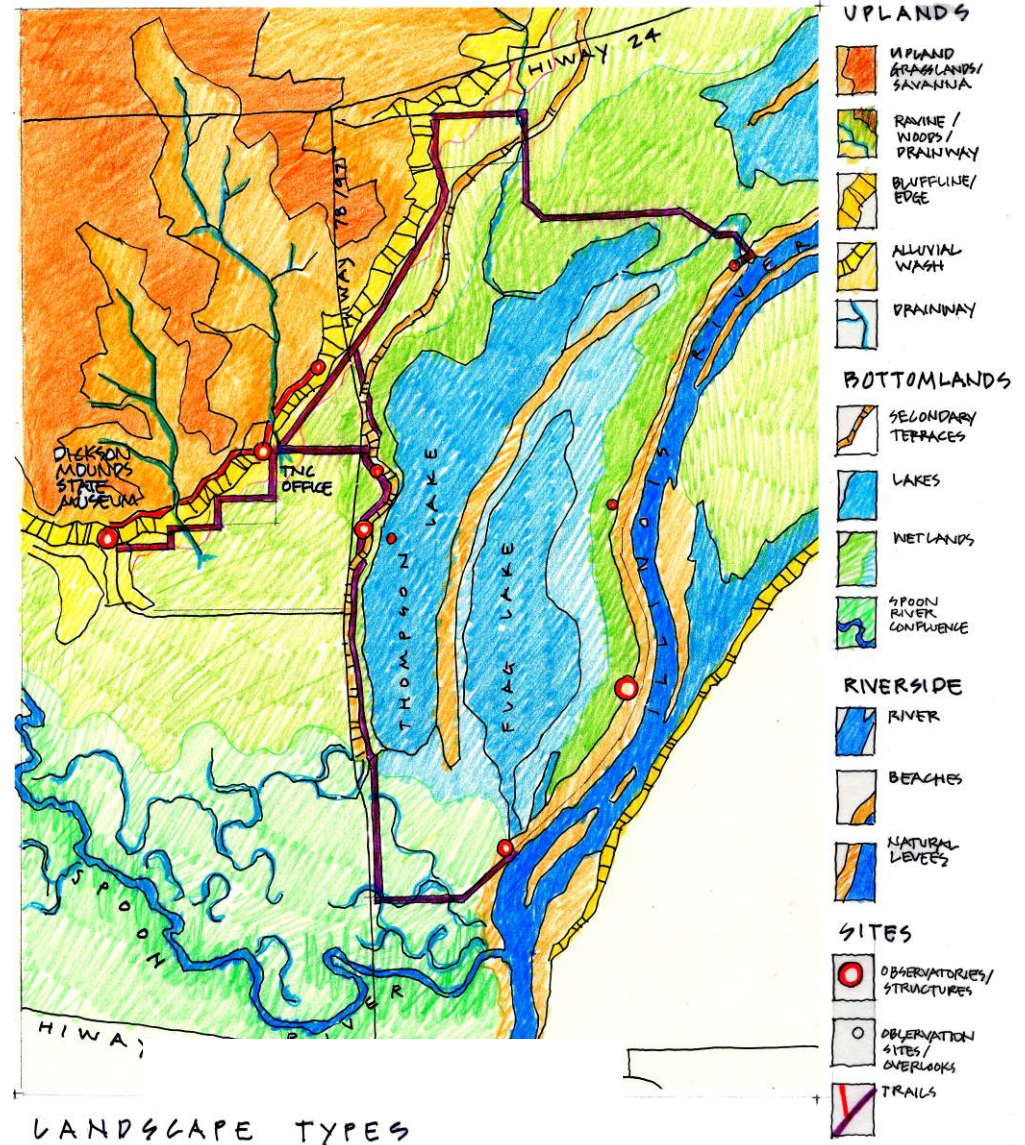


A



B

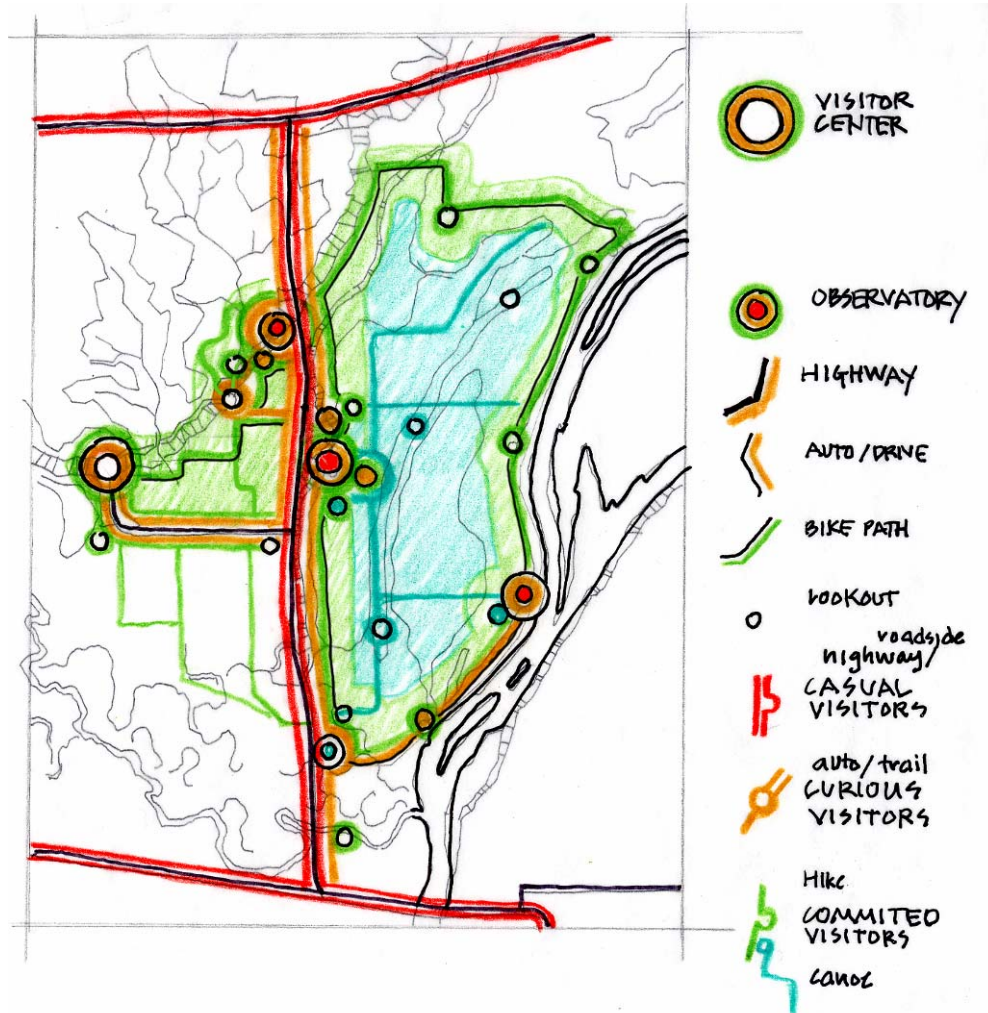
A. General view of the Illinois valley
B. Low mounds on the ridge at Hill Top, Morton Farm



Access – Visitor Experiences

Type Activity/Interest Area Experience Goal

Casual/Passerby	Rest area / Rest room Other primary interest (fairs/shows/family)	Recognition
Curious	Vacation Travelers Spoon River Festival Lincoln Sites Dickson Mounds	Informal Education
Committed	Programmed Hunting/Fishing Wildlife Observation Hikers/Bikers History	and Informal Education



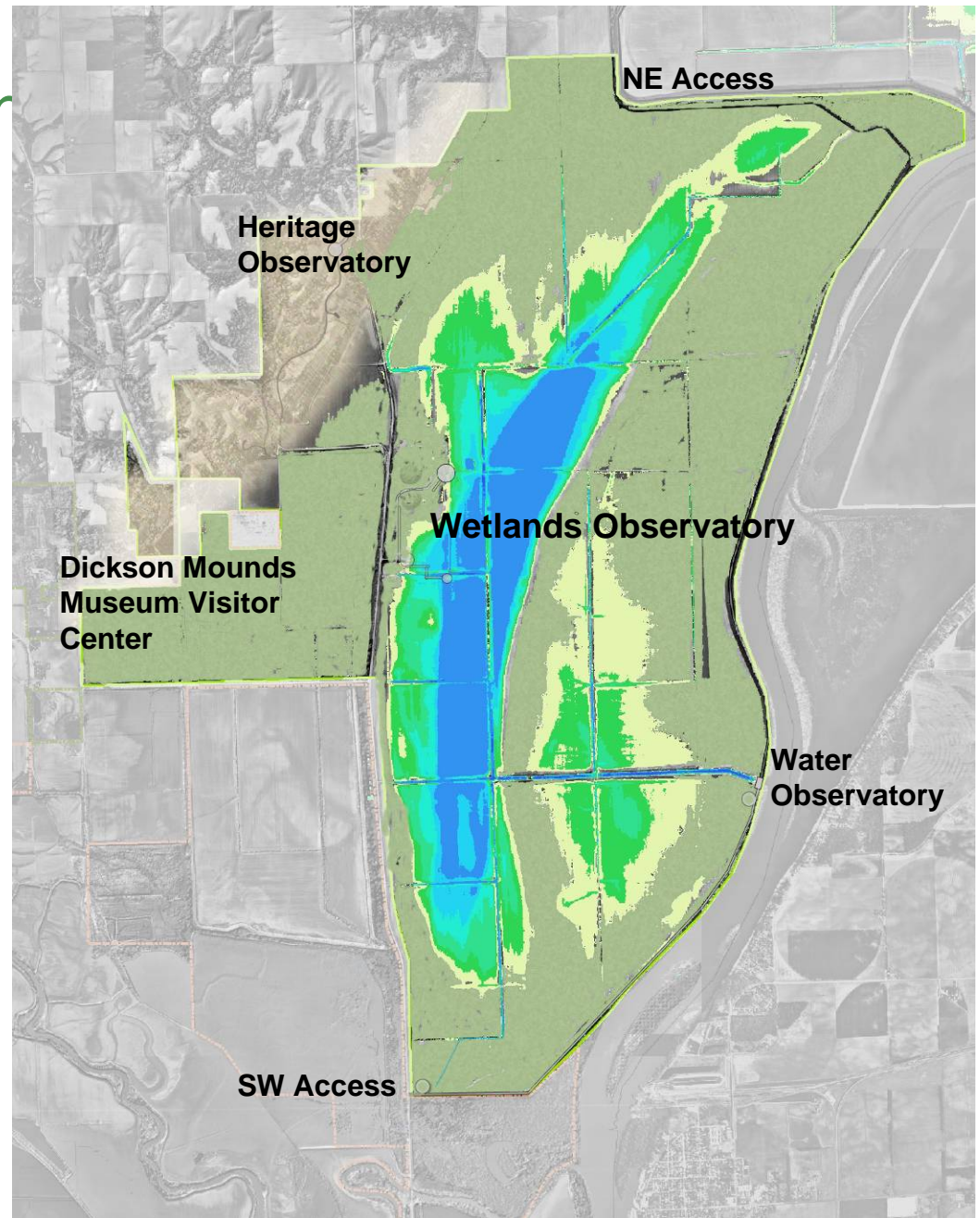
Visitor Use Master Plan

Main Areas

- Dickson Mounds Museum Visitor Center
- Water Observatory (water control structure)
- Wetlands Observatory
- Heritage Observatory

Secondary Areas

- South West Parking
- North East Parking

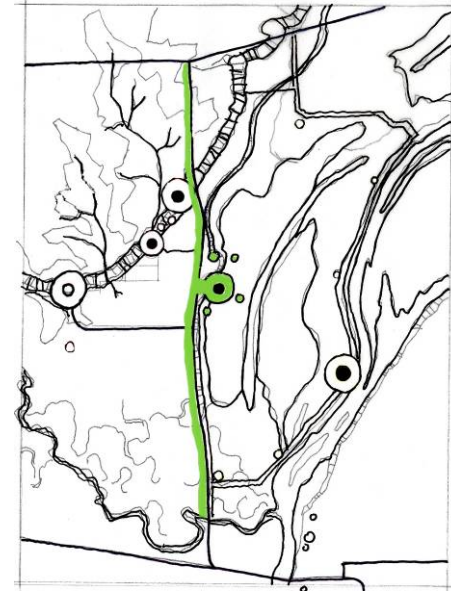
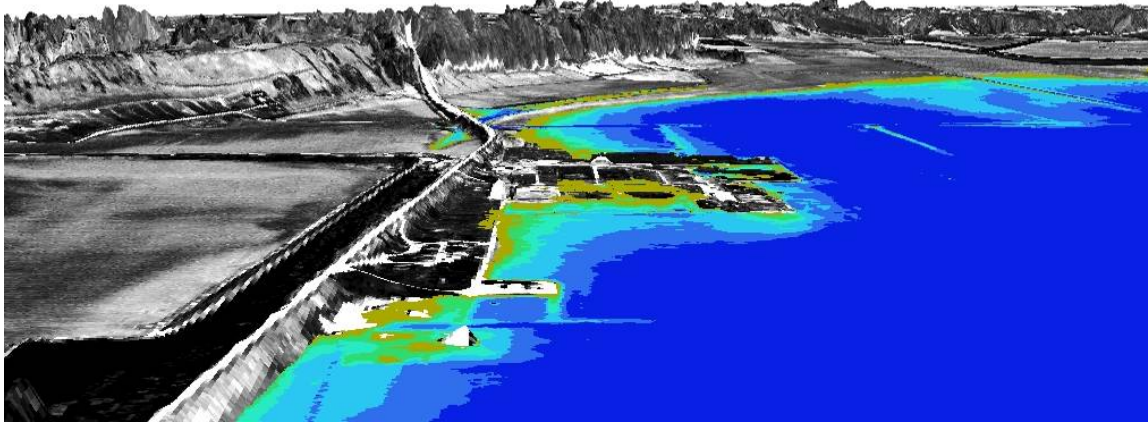


Dickson Mounds Museum Visitor Center



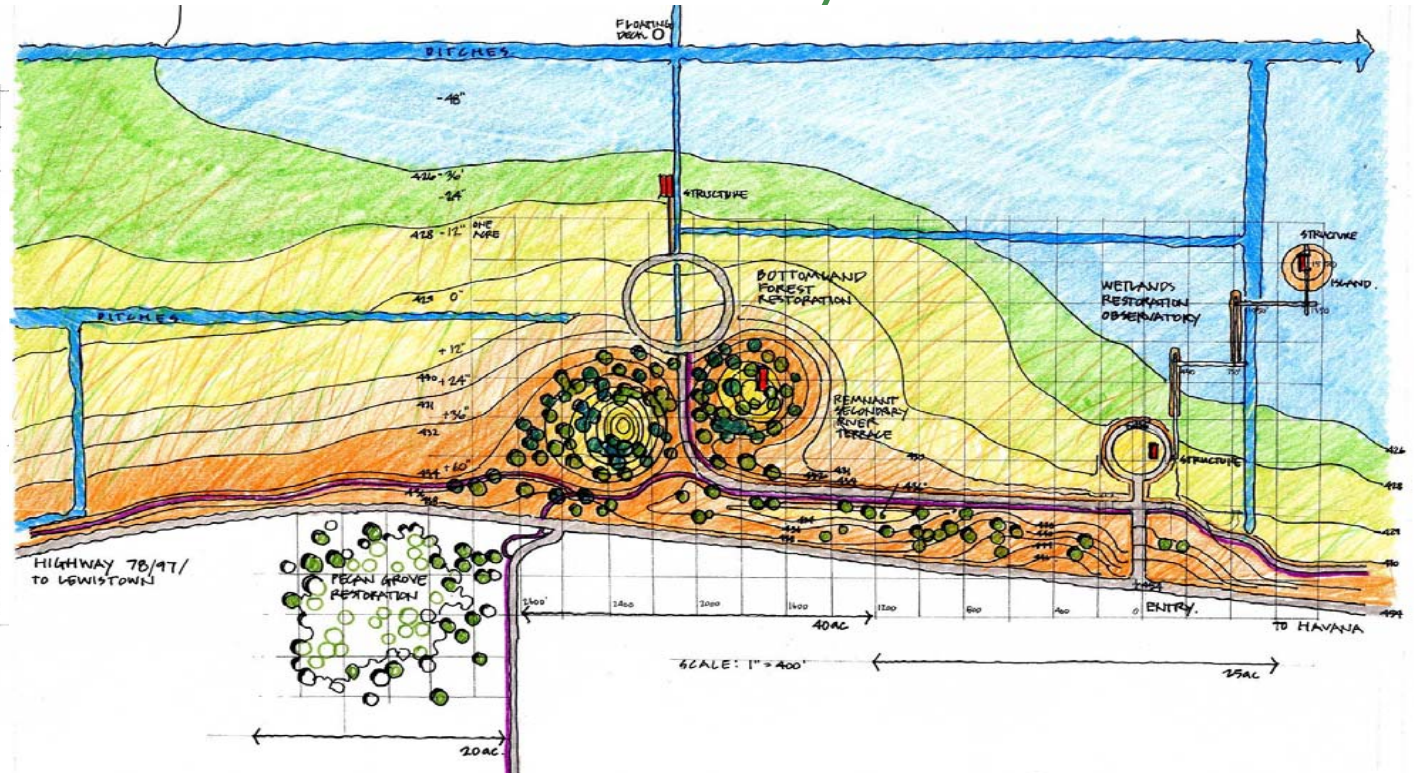
Dickson Mounds plans to transform first floor of the Museum into an area visitor center.

Wetlands / Bottomlands Observatory



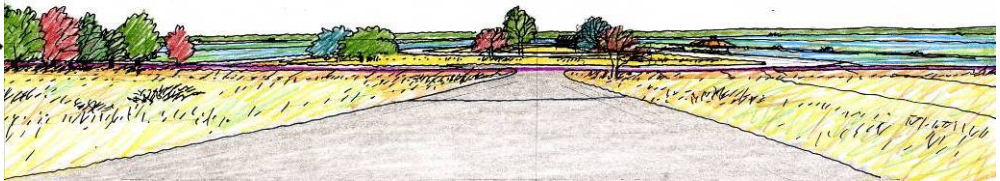
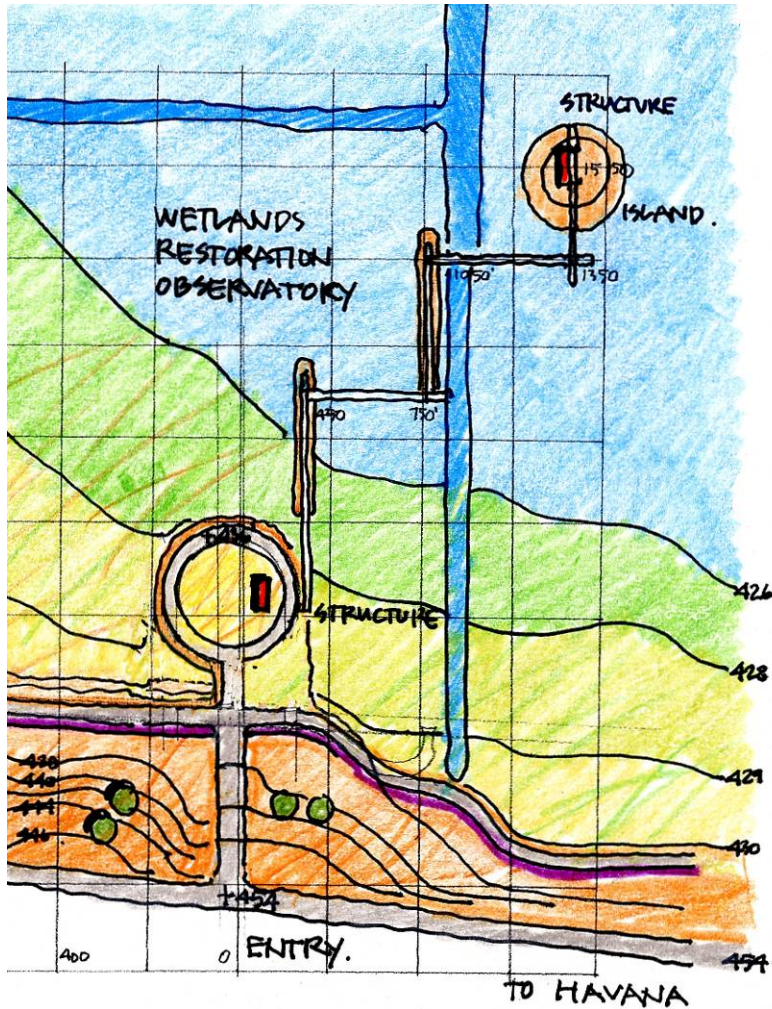
Wetlands / Bottomlands Observatory

Location Key



- Wetland dock system allows visitors to get out into the wetland to view normal water level changes.
- Parking Circles allow ample parking for families, school groups and tour busses.

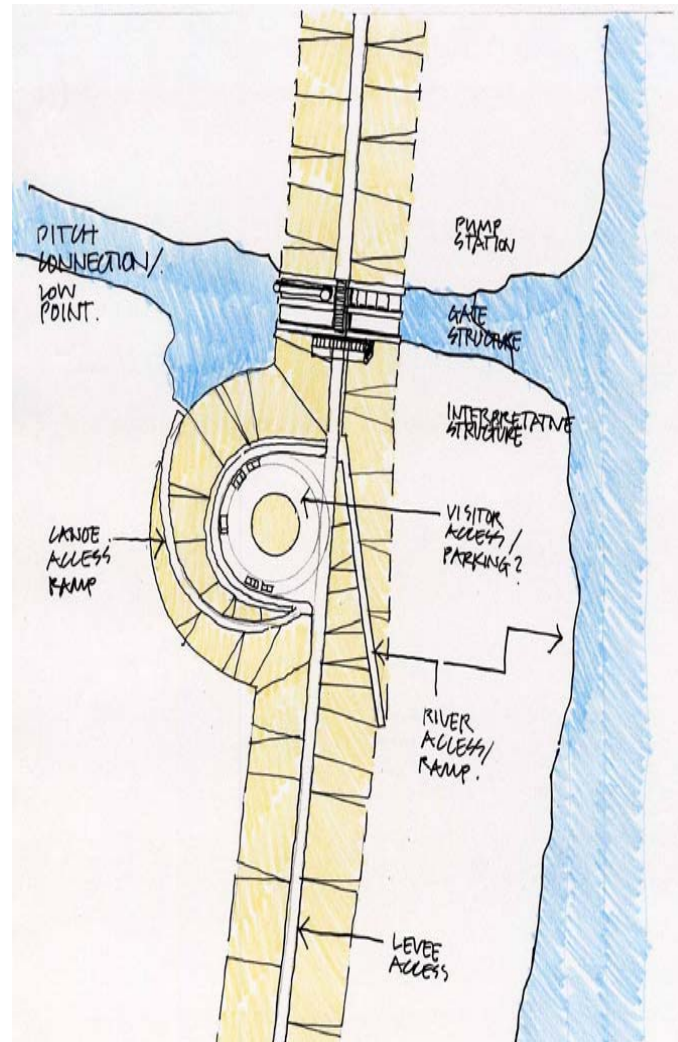
Wetland Observatory



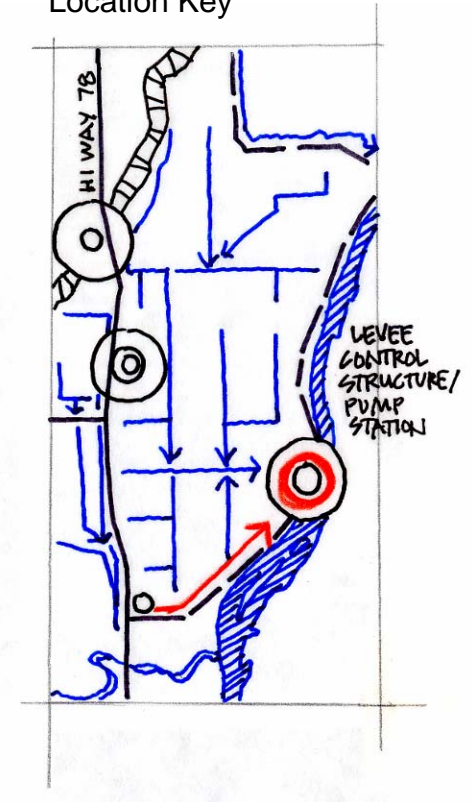
Control Structure Observatory

Control Structure Observatory will allow

- Vehicle access to water control structure
- Limited Parking
- Wetland Canoe access
- Possible Illinois river Canoe access



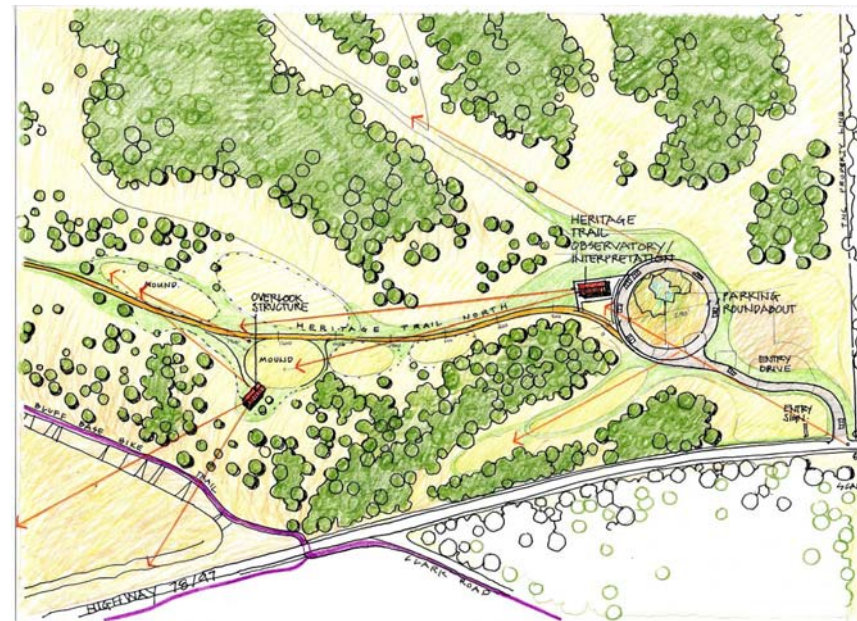
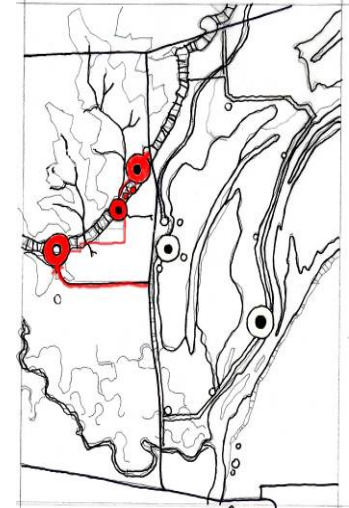
Location Key



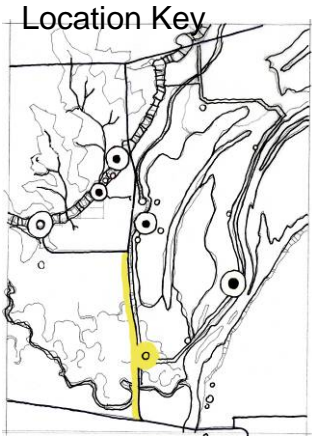
Heritage Observatory

- Heritage observatory will allow panoramic view of Emiquon from observation structure as shown below
- The Heritage trail will follow around the burial mounds allowing for Native American stories to be told.

Location Key

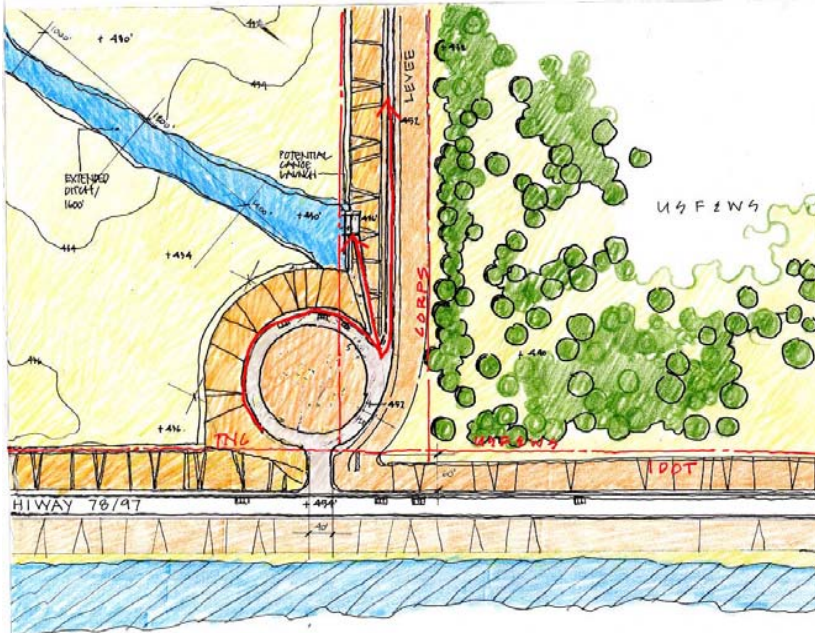


Levee Access Points



S.W. Parking

- Will allow parking directly off of 97/78 at levee.
- Provides access to south end of levee trail.
- Allow for parking prior to construction of control structure.
- Allow for canoe access.



N.E. Parking

- Will allow parking at north end of Levee Trail
- Both lots allow for drop off points and pick up points for the 8 mile levee trail.

