

# U.S. Geological Survey

## Focus and Vision for the Illinois River System

Robert R. Holmes, Jr., PhD, P.E., D.WRE  
Director, USGS Illinois Water Science Center

- **Four Disciplines**
  - Biological Resources
  - Geography
  - Geology
  - Water Resources

Bureau within U.S. Department of Interior



# Areas of USGS Focus for Illinois River System

- Data Collection and Dissemination
  - ❖ Water Quality Assessment at Outlet
- Long-term Resource Monitoring Program (LTRMP)
- USGS Cooperative Program for Interpretive Studies
- Providing Geospatial Support

# Basic Data



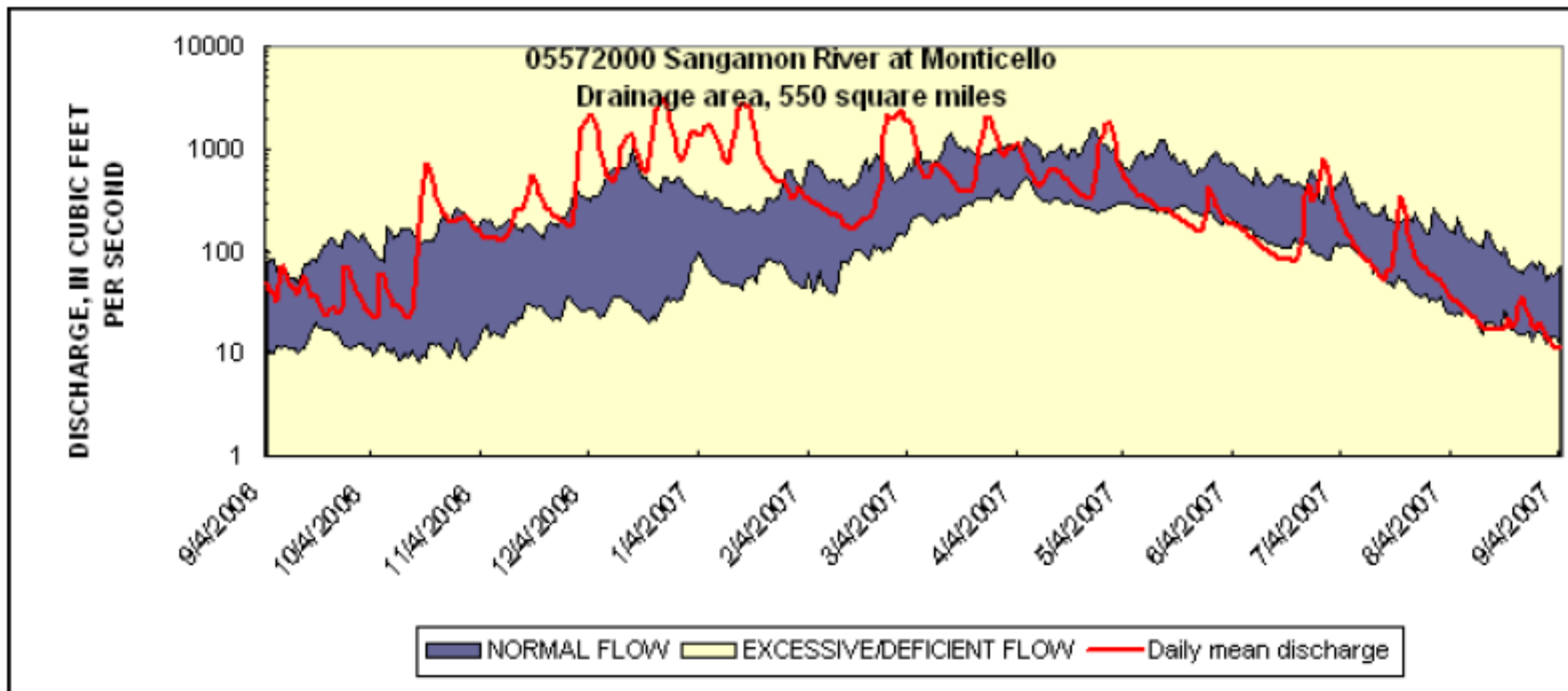
# Basic Data

Over 25 Federal, State, and Local Cooperators

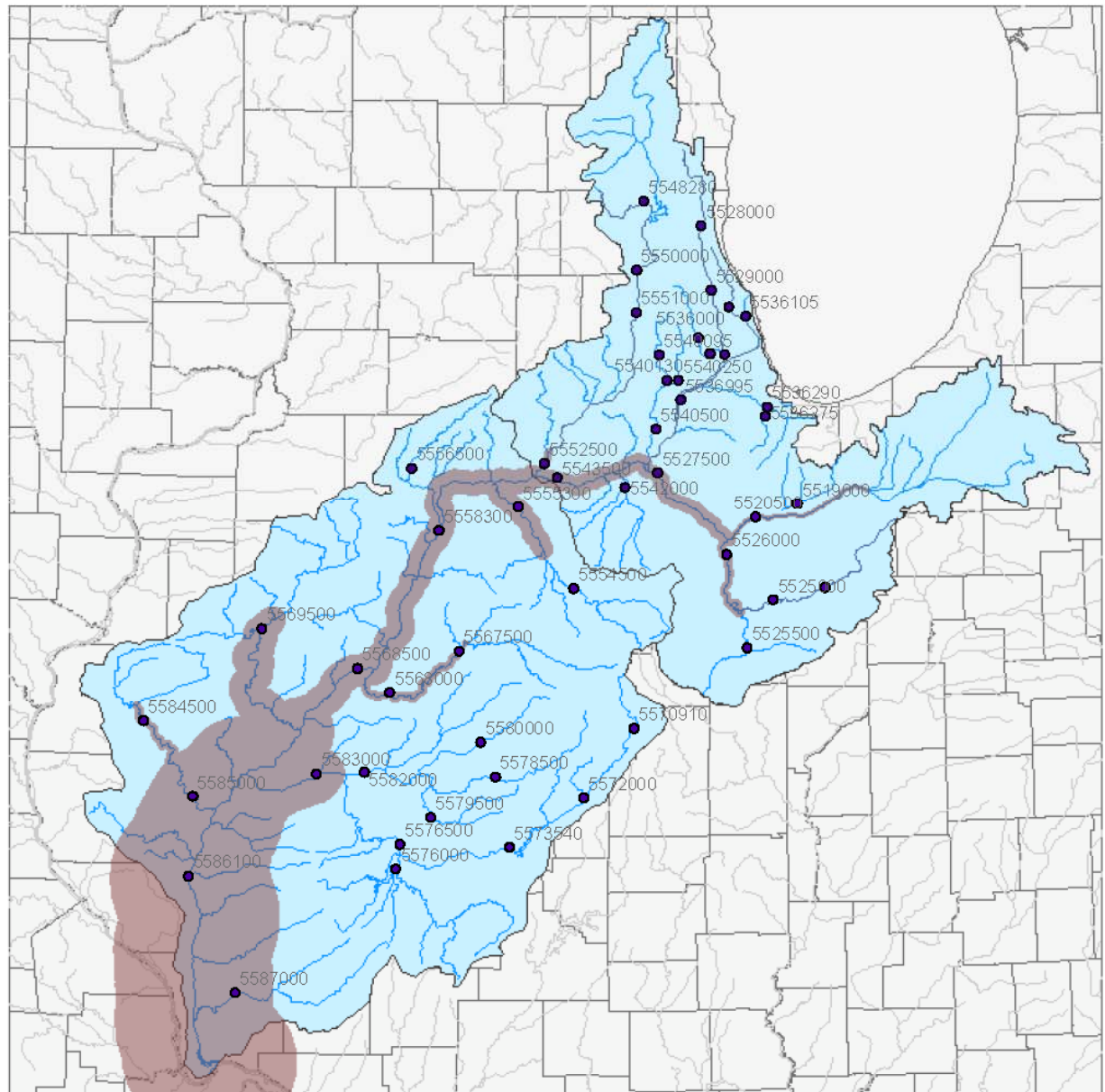
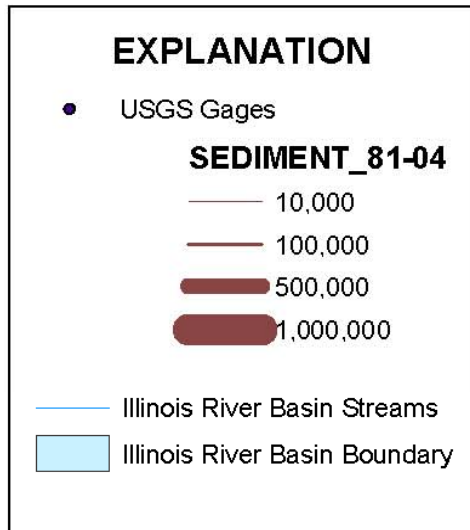
Illinois River at Valley City, Illinois



# Hydrologic Conditions Assessment



# Sediment Average Load (Tons/Year), 1981-2004





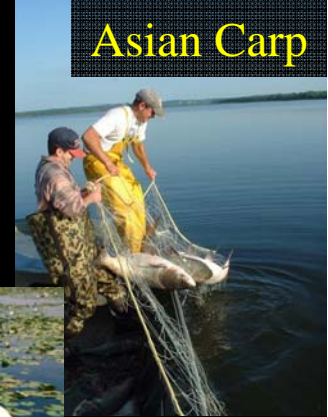
# LTRM Program (Long Term Resource Monitoring)

## Partners:

- USACE
- USFWS
- USGS
- Dept. of Agriculture
- Dept. of Transportation
- EPA
- Minnesota DNR
- Wisconsin DNR
- Illinois DNR
- Illinois NHS
- Iowa DNR
- Missouri DC



Six state-operated field stations have been established for data collection:  
2 stations in IL



Asian Carp



Water Quality



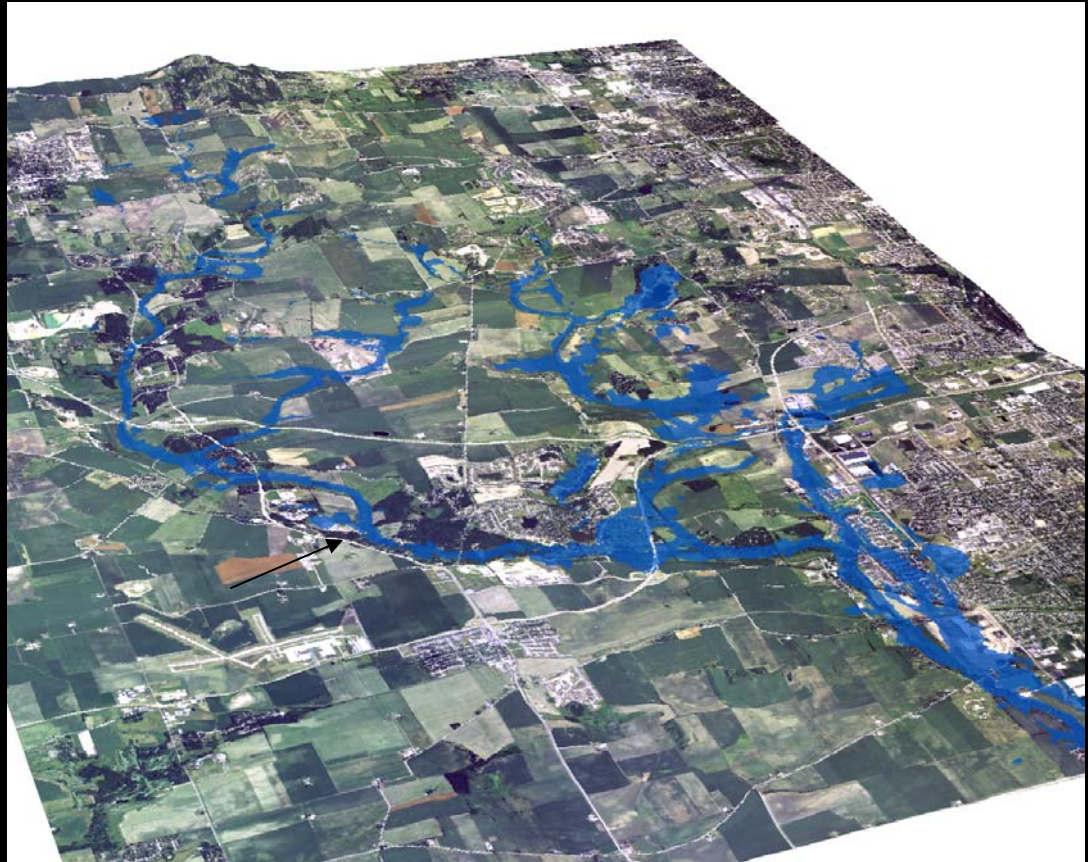
Land Cover & Use





# USGS Cooperative Water Studies

## Blackberry Creek Continuous Modeling





# USGS Cooperative Water Studies

## Impacts of Dam Removal





# Geospatial Programs



NHD GEODATABASE

<http://nhdgeo.usgs.gov/viewer.htm>

The National Map

[NHD Home](#) | [NHD Stewardship](#) | [Metadata](#) | [Partners](#) | [Map Services](#) | [What's New](#) | [Staged SubRegions](#) | [You may need to disable](#)

U.S. Department of the Interior, U.S. Geological Survey, Lakewood, CO, USA  
URL: <http://nhdgeo.usgs.gov/viewer.htm> | Server code: R91  
Contact: [NHD@usgs.gov](mailto:NHD@usgs.gov)  
This web site last modified on: 08/10/2007 17:11:21  
[Privacy Statement](#) | [Disclaimer](#) | [FOIA](#) | [Accessibility](#)



Geospatial Liaison For Illinois---Shelley Silch

**Thank You**